



Technical Data Sheet

ACS Material SAPO-11

Table of Contents

1 – Preparation Method

2 – Characterizations

3 – Application Fields

Contact Information:

Manufacturer: ACS Material, LLC.

Address: 959 E Walnut St. Suite 100

Pasadena, CA 91106, USA

Phone: (866)-227-0656

Fax: (781)-518-0284

E-Mail: contact@acsmaterial.com

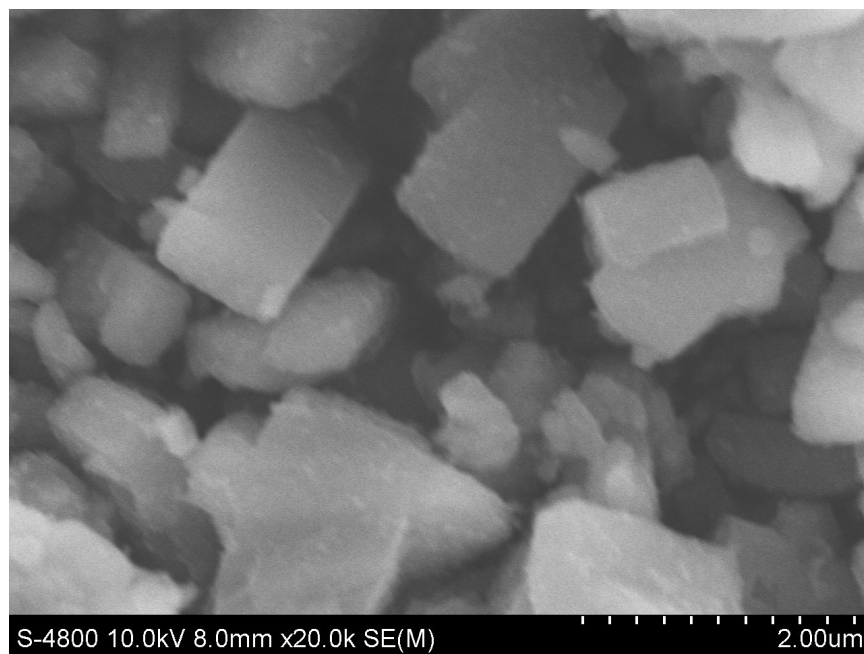
Revision: 050117

1. Preparation Method

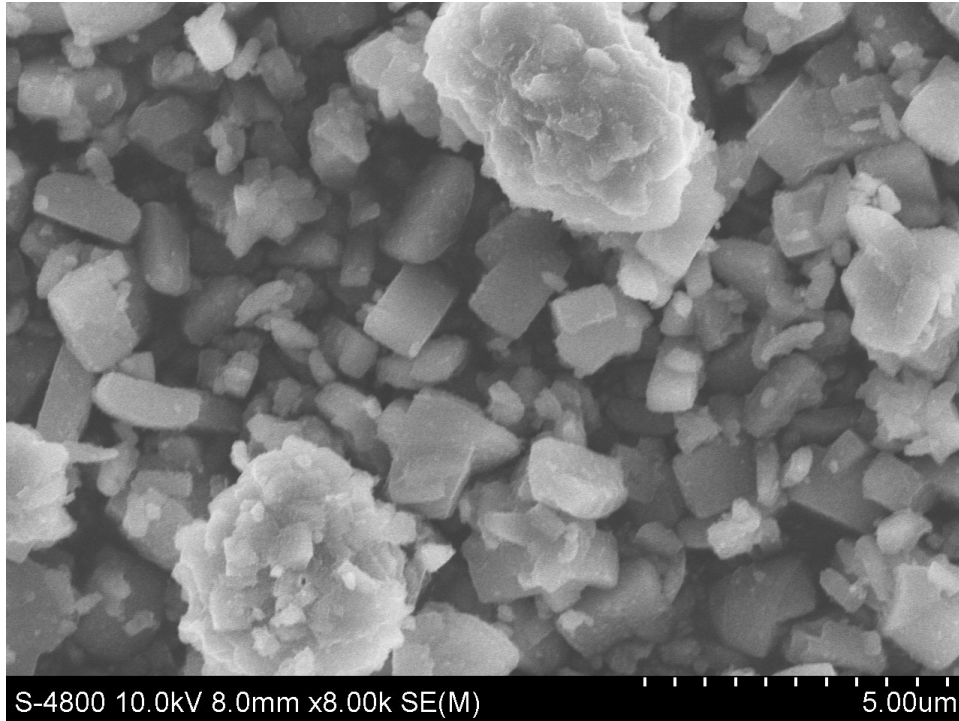
Solvothermal Method

2. Characterizations

Appearance:	White Powder
BET surface area (m²/g):	≥180
Pore Volume (cm³/g):	≥0.16
SiO₂ (%)	~6
Al₂O₃ (%)	~48
Na₂O(%)	≤0.2



Typical SEM Image of ACS Material SAPO-11 (1)



Typical SEM Image of ACS Material SAPO-11 (2)

3. Application Fields

- 1) Catalyst
- 2) Adsorbent

Disclaimer: ACS Material, LLC believes that the information in this Technical Data Sheet is accurate and represents the best and most current information available to us. ACS Material makes no representations or warranties either express or implied, regarding the suitability of the material for any purpose or the accuracy of the information contained within this document. Accordingly, ACS Material will not be responsible for damages resulting from use of or reliance upon this information.