



## Technical Data Sheet

### ACS Material Low Temperature Expandable Graphite

#### Table of Contents

---

[1 – Preparation Method](#)

[2 – Characterizations](#)

[3 – Application Fields](#)

---

#### **Contact Information:**

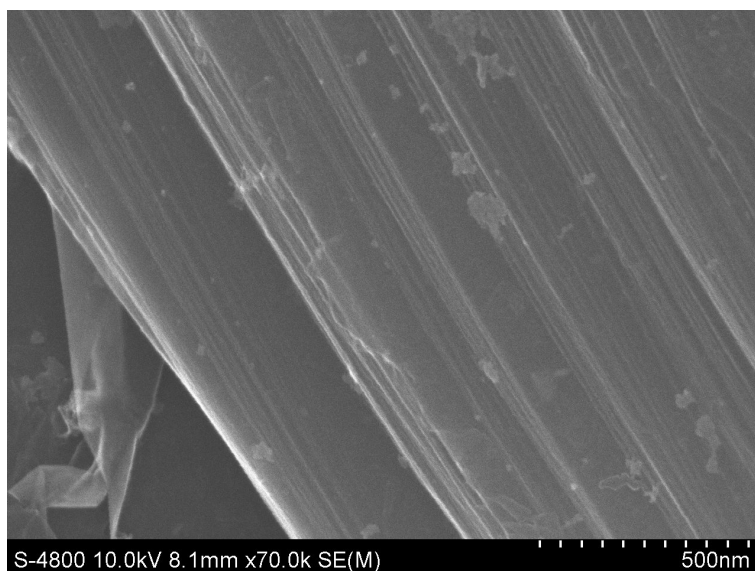
Manufacturer: ACS Material, LLC.  
Address: 959 E Walnut St., Suite 100  
Pasadena, CA 91106, USA  
Phone: (866)-227-0656  
Fax: (781)-518-0284  
E-Mail: [contact@acsmaterial.com](mailto:contact@acsmaterial.com)  
Revision: 072117

## 1. Preparation Method

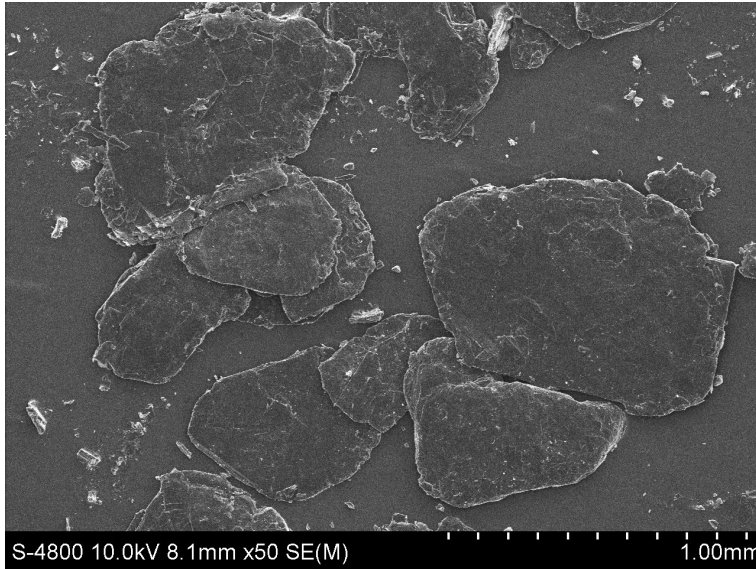
Chemical Oxidation Method

## 2. Characterizations

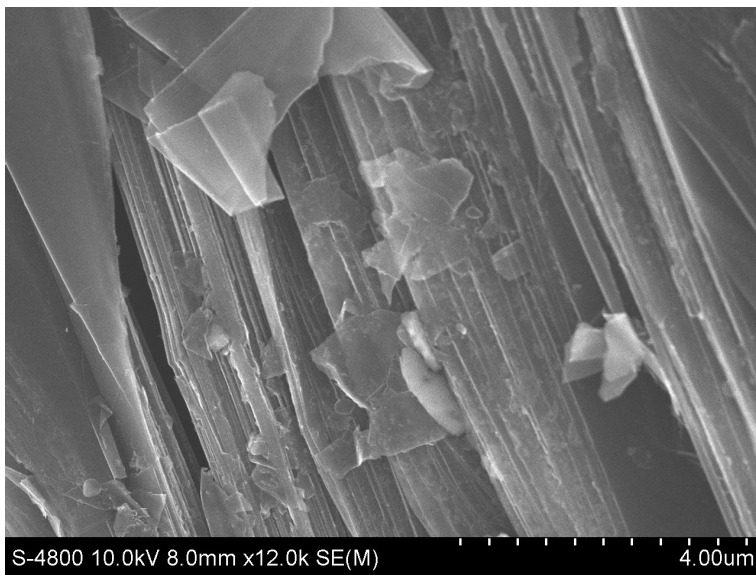
Products No.	Expansion Start Temperature (EST, °C)	pH	Mesh	Packing Density (mg/cm <sup>3</sup> )	Expansion Volume (EV, ml/g)	Property
EG-110-230	110	7.0	80	0.6	230	Super-low Expansion Start Temperature
EG-150-230	150	7.0	80	0.6	230	



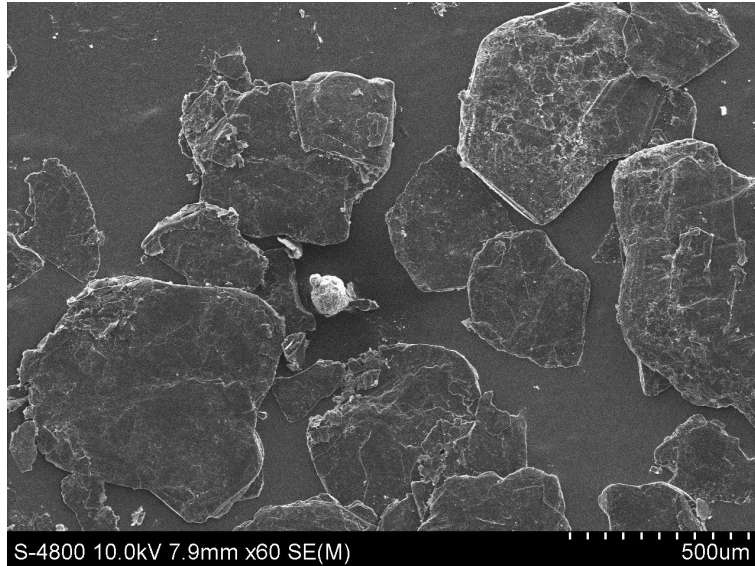
Typical SEM Image (1) of ACS Material Low Temperature Expandable Graphite (EG-110-230)



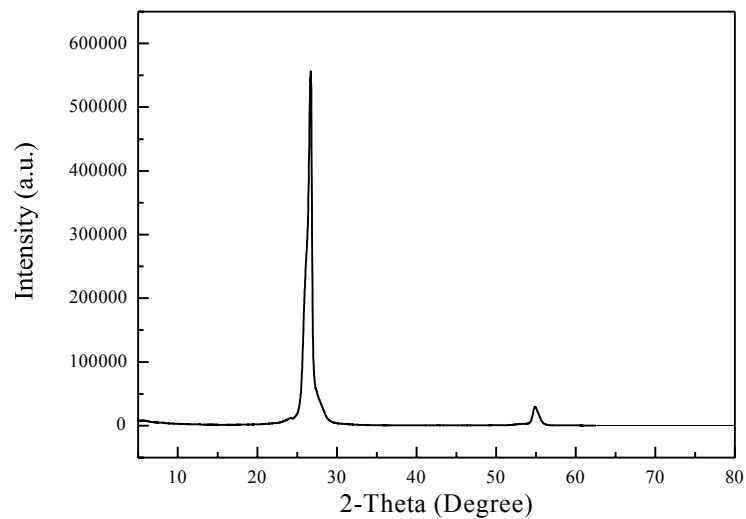
Typical SEM Image (2) of ACS Material Low Temperature Expandable Graphite (EG-110-230)



Typical SEM Image (1) of ACS Material Low Temperature Expandable Graphite (EG-150-230)



Typical SEM Image (2) of ACS Material Low Temperature Expandable Graphite (EG-150-230)



Typical XRD Analysis of ACS Material Low Temperature Expandable Graphite (EG-110-230)

### 3. Application Fields

- 1) Fire-retardant additives
- 2) Lubrication
- 3) Conductive additives

**Disclaimer:** ACS Material, LLC believes that the information in this Technical Data Sheet is accurate and represents the best and most current information available to us. ACS Material makes no representations or warranties either express or implied, regarding the suitability of the material for any purpose or the accuracy of the information contained within this document. Accordingly, ACS Material will not be responsible for damages resulting from use of or reliance upon this information.